



Department  
for Culture,  
Media & Sport

## Public Appointments

**Trustees x4  
Science Museum Group**

[Apply on Public Appointments Website](#)

**Closes at 11:59pm on 3 March 2026**



# Introduction to the Science Museum Group

The Science Museum Group (SMG) incorporates the Science Museum in South Kensington, London; the Science & Industry Museum (SIM) in Manchester; the National Railway Museum (NRM) in York; Locomotion in Shildon; the National Science & Media Museum (NSMM) in Bradford, and the Science + Innovation Park (S+IP) in Wroughton, near Swindon.

The Group's mission is to 'inspire futures' and its six sites are a key national resource. SMG shares its unparalleled collection of over seven million objects spanning science, technology, engineering and mathematics (STEM) with over 3.8 million visitors each year, in addition to over 650,000 school visits and a huge digital audience. It is the world's leading group of science museums and therefore is uniquely placed to draw people of all ages to engage with science in an inspirational and informal way, with its extensive national and international programme of exhibitions, research, skills sharing and consultancy.



[Find out more about the Science Museum Group here](#)

# Board Composition

The Board of Trustees of the Science Museum is responsible for the whole of the Science Museum Group (SMG). The Trustees are appointed by and responsible to the Prime Minister through the Department for Culture, Media and Sport (DCMS). The SMG Director, as Chief Executive Officer, is responsible to the Board of Trustees, and, as Accounting Officer, is accountable to DCMS.



## Key Role Information

### Time Commitment

2 days per month

### Location

UK-wide

### Remuneration

Reasonable expenses will be reimbursed

[Find out more about the Science Museum Group here](#)

## About the role



### Trustee

Within the framework of their statutory duties as stated under the National Heritage Act 1983, the role of the Trustees is to assist the SMG Chair in meeting the board's overall responsibilities, in accordance with the policies of the Secretary of State, and in compliance with charity law. The Board of Trustees also offers guidance and expertise on setting and implementing the strategy for the Group.

The Group has four Board meetings per year, one of which takes place the day before a residential 'strategy day'. In addition, Trustees are expected to attend other committee meetings as necessary as well as occasionally attending profile-raising events at the museums.

# What are we looking for?

## Essential Criteria

- **Knowledge:** a clear understanding of the work, priorities and challenges of the Science Museum Group (SMG) and the context within which it operates.
- **Judgement:** effective decision-making skills with the ability to critically analyse information to make clear and objective evidence-based recommendations.
- **Communication:** strong communication and interpersonal skills with the ability to listen, accept challenges and constructively challenge others.
- A demonstrable **commitment to diversity, equality and inclusion** and the importance of this for cultural organisations; and factoring nationwide perspectives into all decision-making.

## Desirable Criteria

We welcome applicants from a wide range of backgrounds and experience, particularly those who can demonstrate the following desirable criteria:

- Located in the north of England.
- An understanding of the role of the museum and cultural sector in place-making.



# What are we looking for?

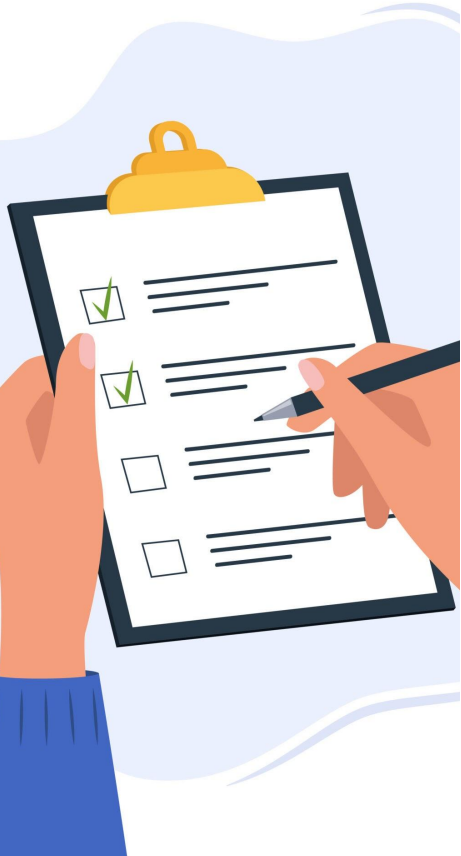
## Additional Criteria

- **Digital and AI:** a professional background in digital strategy, technologies, and growth with experience of guiding organisations and overseeing complex projects to ensure digital opportunities are fully implemented.
- **Property Development and Management Trustee:** a professional background in property development or management with experience of overseeing high-level capital projects.
- **Collections, Museums and Heritage Trustee:** Senior experience in collections, museums and heritage, with the ability to apply this knowledge to the SMG's collections.
- **Science and Engineering Trustee:** a professional background in science or engineering or extensive experience in research of international distinction in a STEM subject area.



[Find out more about the Science Museum Group here](#)

# How to apply



In order to apply you will need to [create an account](#) or [sign in](#).

Once you are logged into your account, click on 'apply for this role' and follow the on-screen instructions.

To apply, all candidates are required to provide:

- equality information
- information relating to any outside interests or reputational issues
- a Curriculum Vitae (CV)
- a supporting statement
- a short professional biography (150 words)

We will ask you to check and confirm your personal details to ensure your application is accurate.

You will also have the opportunity to make a reasonable adjustment request or apply under the disability confident scheme before you submit your application.

As part of your application, you will be asked to provide equality information including special category data (which may identify your race/ ethnic background or health); you have the choice to opt out from sharing any equality data, by selecting 'prefer not to say'. DCMS will use your data in line with our [privacy policy](#).

# Questions?

The full role advert including eligibility criteria is available on the [HMG Public Appointments Website](#)

To discuss the Trustee roles, please contact Sian Thompson: [sian.thompson@sciencemuseum.ac.uk](mailto:sian.thompson@sciencemuseum.ac.uk).

To discuss the appointment process, please contact Emily Nixon: [publicappointments@dcms.gov.uk](mailto:publicappointments@dcms.gov.uk) and include “Science Museum Group” in the subject line.

